



RANDOM LENGTHS

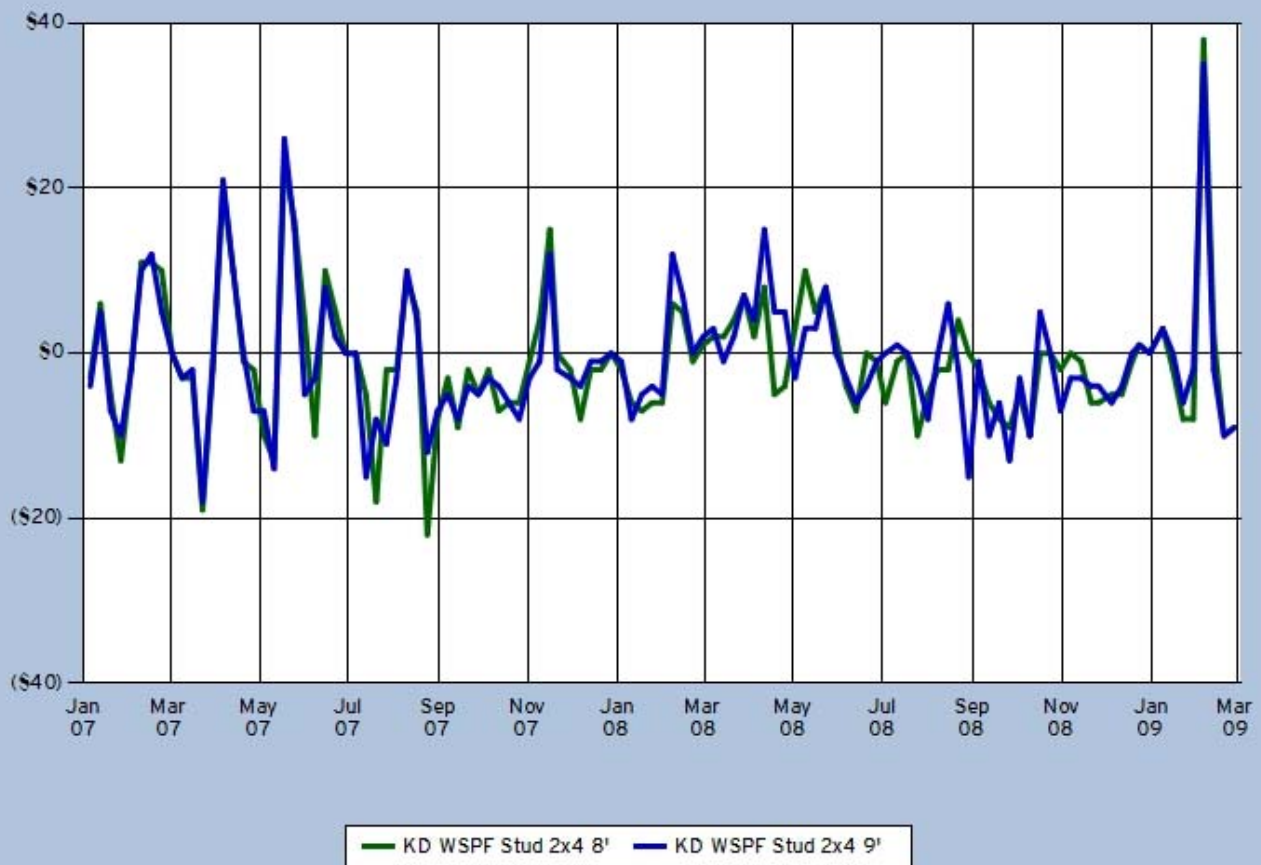
My Print

ON-DEMAND GRAPHS AND PRICE REPORTS

Report Name: !Canadian SPF - WSPF 2x4-8 vs. -9 Studs
Report Type: Up/Down Report
Start Date: Friday, December 29, 2006
End Date: To Present
Template Applied: RL Default [Up/Down Report / Weekly]
Comments:
Report Items:

- Kiln dried Western Spruce-Pine-Fir Stud 2x4 8-foot Precision End Trimmed
- Kiln dried Western Spruce-Pine-Fir Stud 2x4 9-foot Precision End Trimmed

WSPF 2x4-8 vs. -9 Studs



© Copyright 2009, Random Lengths, WWW.RLMYPRINT.COM

KD W S-P-F Stud 2x4 8' PET

Date	Price	Change	
12/29/2006	\$265		
1/5/2007	\$262	-3	↓
1/12/2007	\$268	6	↑
1/19/2007	\$263	-5	↓
1/26/2007	\$250	-13	↓
2/2/2007	\$248	-2	↓
2/9/2007	\$259	11	↑
2/16/2007	\$270	11	↑
2/23/2007	\$280	10	↑
3/2/2007	\$280	0	
3/9/2007	\$277	-3	↓
3/16/2007	\$274	-3	↓
3/23/2007	\$255	-19	↓
3/30/2007	\$253	-2	↓
4/6/2007	\$273	20	↑
4/13/2007	\$283	10	↑
4/20/2007	\$282	-1	↓
4/27/2007	\$280	-2	↓
5/4/2007	\$270	-10	↓
5/11/2007	\$257	-13	↓
5/18/2007	\$280	23	↑
5/25/2007	\$296	16	↑
6/1/2007	\$300	4	↑
6/8/2007	\$290	-10	↓
6/15/2007	\$300	10	↑
6/22/2007	\$305	5	↑
6/29/2007	\$305	0	
7/6/2007	\$305	0	
7/13/2007	\$300	-5	↓
7/20/2007	\$282	-18	↓
7/27/2007	\$280	-2	↓
8/3/2007	\$278	-2	↓
8/10/2007	\$287	9	↑
8/17/2007	\$292	5	↑
8/24/2007	\$270	-22	↓
8/31/2007	\$262	-8	↓
9/7/2007	\$259	-3	↓
9/14/2007	\$250	-9	↓
9/21/2007	\$248	-2	↓
9/28/2007	\$243	-5	↓
10/5/2007	\$241	-2	↓
10/12/2007	\$234	-7	↓
10/19/2007	\$228	-6	↓
10/26/2007	\$222	-6	↓
11/2/2007	\$221	-1	↓
11/9/2007	\$225	4	↑
11/16/2007	\$240	15	↑
11/21/2007	\$240	0	
11/30/2007	\$238	-2	↓
12/7/2007	\$230	-8	↓

KD W S-P-F Stud 2x4 9' PET

Date	Price	Change	
12/29/2006	\$266		
1/5/2007	\$262	-4	↓
1/12/2007	\$267	5	↑
1/19/2007	\$260	-7	↓
1/26/2007	\$250	-10	↓
2/2/2007	\$248	-2	↓
2/9/2007	\$258	10	↑
2/16/2007	\$270	12	↑
2/23/2007	\$275	5	↑
3/2/2007	\$275	0	
3/9/2007	\$272	-3	↓
3/16/2007	\$270	-2	↓
3/23/2007	\$252	-18	↓
3/30/2007	\$251	-1	↓
4/6/2007	\$272	21	↑
4/13/2007	\$282	10	↑
4/20/2007	\$282	0	
4/27/2007	\$275	-7	↓
5/4/2007	\$268	-7	↓
5/11/2007	\$254	-14	↓
5/18/2007	\$280	26	↑
5/25/2007	\$295	15	↑
6/1/2007	\$290	-5	↓
6/8/2007	\$287	-3	↓
6/15/2007	\$295	8	↑
6/22/2007	\$297	2	↑
6/29/2007	\$297	0	
7/6/2007	\$297	0	
7/13/2007	\$282	-15	↓
7/20/2007	\$274	-8	↓
7/27/2007	\$263	-11	↓
8/3/2007	\$260	-3	↓
8/10/2007	\$270	10	↑
8/17/2007	\$274	4	↑
8/24/2007	\$262	-12	↓
8/31/2007	\$255	-7	↓
9/7/2007	\$250	-5	↓
9/14/2007	\$242	-8	↓
9/21/2007	\$238	-4	↓
9/28/2007	\$233	-5	↓
10/5/2007	\$230	-3	↓
10/12/2007	\$226	-4	↓
10/19/2007	\$220	-6	↓
10/26/2007	\$212	-8	↓
11/2/2007	\$209	-3	↓
11/9/2007	\$208	-1	↓
11/16/2007	\$220	12	↑
11/21/2007	\$218	-2	↓
11/30/2007	\$215	-3	↓
12/7/2007	\$211	-4	↓

12/14/2007	\$228	-2	↓
12/21/2007	\$226	-2	↓
12/28/2007	\$226	0	
1/4/2008	\$224	-2	↓
1/11/2008	\$218	-6	↓
1/18/2008	\$211	-7	↓
1/25/2008	\$205	-6	↓
2/1/2008	\$199	-6	↓
2/8/2008	\$205	6	↑
2/15/2008	\$210	5	↑
2/22/2008	\$209	-1	↓
2/29/2008	\$210	1	↑
3/7/2008	\$212	2	↑
3/14/2008	\$214	2	↑
3/21/2008	\$218	4	↑
3/28/2008	\$225	7	↑
4/4/2008	\$227	2	↑
4/11/2008	\$235	8	↑
4/18/2008	\$230	-5	↓
4/25/2008	\$226	-4	↓
5/2/2008	\$229	3	↑
5/9/2008	\$239	10	↑
5/16/2008	\$244	5	↑
5/23/2008	\$252	8	↑
5/30/2008	\$254	2	↑
6/6/2008	\$250	-4	↓
6/13/2008	\$243	-7	↓
6/20/2008	\$243	0	
6/27/2008	\$242	-1	↓
7/3/2008	\$236	-6	↓
7/11/2008	\$235	-1	↓
7/18/2008	\$235	0	
7/25/2008	\$225	-10	↓
8/1/2008	\$220	-5	↓
8/8/2008	\$218	-2	↓
8/15/2008	\$216	-2	↓
8/22/2008	\$220	4	↑
8/29/2008	\$220	0	
9/5/2008	\$218	-2	↓
9/12/2008	\$212	-6	↓
9/19/2008	\$204	-8	↓
9/26/2008	\$195	-9	↓
10/3/2008	\$190	-5	↓
10/10/2008	\$180	-10	↓
10/17/2008	\$180	0	
10/24/2008	\$180	0	
10/31/2008	\$178	-2	↓
11/7/2008	\$178	0	
11/14/2008	\$177	-1	↓
11/21/2008	\$171	-6	↓
11/26/2008	\$165	-6	↓
12/5/2008	\$160	-5	↓

12/14/2007	\$210	-1	↓
12/21/2007	\$209	-1	↓
12/28/2007	\$209	0	
1/4/2008	\$208	-1	↓
1/11/2008	\$200	-8	↓
1/18/2008	\$195	-5	↓
1/25/2008	\$191	-4	↓
2/1/2008	\$186	-5	↓
2/8/2008	\$198	12	↑
2/15/2008	\$205	7	↑
2/22/2008	\$205	0	
2/29/2008	\$207	2	↑
3/7/2008	\$210	3	↑
3/14/2008	\$209	-1	↓
3/21/2008	\$211	2	↑
3/28/2008	\$218	7	↑
4/4/2008	\$222	4	↑
4/11/2008	\$237	15	↑
4/18/2008	\$242	5	↑
4/25/2008	\$247	5	↑
5/2/2008	\$244	-3	↓
5/9/2008	\$247	3	↑
5/16/2008	\$250	3	↑
5/23/2008	\$258	8	↑
5/30/2008	\$258	0	
6/6/2008	\$255	-3	↓
6/13/2008	\$249	-6	↓
6/20/2008	\$245	-4	↓
6/27/2008	\$244	-1	↓
7/3/2008	\$244	0	
7/11/2008	\$245	1	↑
7/18/2008	\$245	0	
7/25/2008	\$242	-3	↓
8/1/2008	\$234	-8	↓
8/8/2008	\$234	0	
8/15/2008	\$240	6	↑
8/22/2008	\$238	-2	↓
8/29/2008	\$223	-15	↓
9/5/2008	\$222	-1	↓
9/12/2008	\$212	-10	↓
9/19/2008	\$206	-6	↓
9/26/2008	\$193	-13	↓
10/3/2008	\$190	-3	↓
10/10/2008	\$180	-10	↓
10/17/2008	\$185	5	↑
10/24/2008	\$185	0	
10/31/2008	\$178	-7	↓
11/7/2008	\$175	-3	↓
11/14/2008	\$172	-3	↓
11/21/2008	\$168	-4	↓
11/26/2008	\$164	-4	↓
12/5/2008	\$158	-6	↓

12/12/2008	\$155	-5	↓
12/19/2008	\$154	-1	↓
12/24/2008	\$155	1	↑
12/31/2008	\$155	0	
1/9/2009	\$158	3	↑
1/16/2009	\$156	-2	↓
1/23/2009	\$148	-8	↓
1/30/2009	\$140	-8	↓
2/6/2009	\$178	38	↑H
2/13/2009	\$180	2	↑
2/20/2009	\$170	-10	↓
2/27/2009	\$161	-9	↓

12/12/2008	\$154	-4	↓
12/19/2008	\$154	0	
12/24/2008	\$155	1	↑
12/31/2008	\$155	0	
1/9/2009	\$158	3	↑
1/16/2009	\$158	0	
1/23/2009	\$152	-6	↓
1/30/2009	\$150	-2	↓
2/6/2009	\$185	35	↑H
2/13/2009	\$183	-2	↓
2/20/2009	\$173	-10	↓
2/27/2009	\$164	-9	↓



RANDOM LENGTHS

My Print

ON-DEMAND GRAPHS AND PRICE REPORTS

Report Name: !Panels - Fir 1/2-inch 4-ply, SYP 1/2-inch 4-ply (West)
Report Type: Up/Down Report
Start Date: Friday, December 01, 2006
End Date: To Present
Template Applied: RL Default [Up/Down Report / Monthly]
Comments:
Report Items:

- Western Plywood Sheathing C-face D-back Exterior glue 1/2-inch 4-ply
- Southern Plywood Sheathing (West) C-face D-back Exterior glue 15/32-inch 4-ply

Fir 1/2-inch 4-ply, SYP 1/2-inch 4-ply (West)



— W Ply Sheath CDX 1/2 4p — S Ply Sheath (West) CDX 15/32 4p

© Copyright 2009, Random Lengths, WWW.RLMYPRINT.COM

Western Plywood Sheathing CDX 1/2"
4-ply

Southern Plywood Sheathing (West)
CDX 15/32" 4-ply

Month	Price	Change	
12/2006	\$319		
01/2007	\$340	21	↑
02/2007	\$331	-9	↓
03/2007	\$312	-19	↓
04/2007	\$320	8	↑
05/2007	\$334	14	↑
06/2007	\$375	41	↑H
07/2007	\$404	29	↑
08/2007	\$391	-13	↓
09/2007	\$367	-24	↓
10/2007	\$327	-40	↓L
11/2007	\$341	14	↑
12/2007	\$334	-7	↓
01/2008	\$302	-32	↓
02/2008	\$298	-4	↓
03/2008	\$293	-5	↓
04/2008	\$316	23	↑
05/2008	\$348	32	↑
06/2008	\$317	-31	↓
07/2008	\$304	-13	↓
08/2008	\$319	15	↑
09/2008	\$315	-4	↓
10/2008	\$284	-31	↓
11/2008	\$271	-13	↓
12/2008	\$259	-12	↓
01/2009	\$247	-12	↓
02/2009	\$240	-7	↓

Month	Price	Change	
12/2006	\$268		
01/2007	\$288	20	↑
02/2007	\$291	3	↑
03/2007	\$287	-4	↓
04/2007	\$323	36	↑H
05/2007	\$341	18	↑
06/2007	\$372	31	↑
07/2007	\$360	-12	↓
08/2007	\$359	-1	↓
09/2007	\$331	-28	↓
10/2007	\$338	7	↑
11/2007	\$356	18	↑
12/2007	\$331	-25	↓
01/2008	\$315	-16	↓
02/2008	\$315	0	
03/2008	\$305	-10	↓
04/2008	\$323	18	↑
05/2008	\$355	32	↑
06/2008	\$321	-34	↓
07/2008	\$317	-4	↓
08/2008	\$326	9	↑
09/2008	\$353	27	↑
10/2008	\$294	-59	↓L
11/2008	\$264	-30	↓
12/2008	\$245	-19	↓
01/2009	\$246	1	↑
02/2009	\$270	24	↑



RANDOM LENGTHS

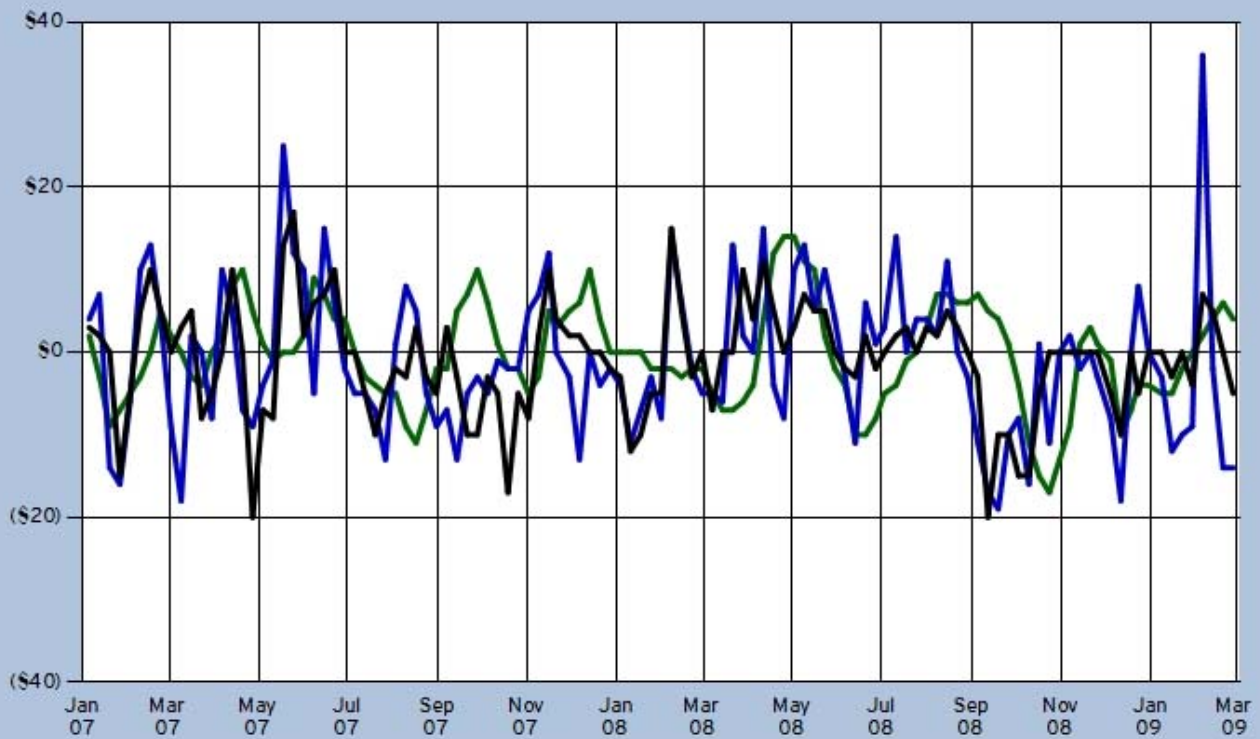
My Print

ON-DEMAND GRAPHS AND PRICE REPORTS

Report Name: !Southern Pine - SYP, W-SPF, H-F (C)
Report Type: Up/Down Report
Start Date: Friday, December 29, 2006
End Date: To Present
Template Applied: RL Default [Up/Down Report / Weekly]
Comments:
Report Items:

- Kiln dried Dimension Southern Pine (West) #2 2x4 random length
- Kiln dried Dimension Western Spruce-Pine-Fir #2 and Better 2x4 random length
- Kiln dried Dimension Hem-Fir (Coast mills) #2 and Better 2x4 random length

SYP, W-SPF, H-F (C)



— KD SYP (West) #2 2x4 RL — KD WSPF 2&B 2x4 RL — KD H-F (Cst) 2&B 2x4 RL

KD S Pine (West) #2 2x4 random

KD W S-P-F #2&Btr 2x4 random

KD Hem-Fir (Coast) #2&Btr 2x4 random

Date	Price	Change	
12/29/2006	\$280		
1/5/2007	\$282	2	↑
1/12/2007	\$279	-3	↓
1/19/2007	\$270	-9	↓
1/26/2007	\$263	-7	↓
2/2/2007	\$258	-5	↓
2/9/2007	\$255	-3	↓
2/16/2007	\$255	0	
2/23/2007	\$260	5	↑
3/2/2007	\$262	2	↑
3/9/2007	\$262	0	
3/16/2007	\$259	-3	↓
3/23/2007	\$255	-4	↓
3/30/2007	\$255	0	
4/6/2007	\$257	2	↑
4/13/2007	\$265	8	↑
4/20/2007	\$275	10	↑
4/27/2007	\$280	5	↑
5/4/2007	\$281	1	↑
5/11/2007	\$280	-1	↓
5/18/2007	\$280	0	
5/25/2007	\$280	0	
6/1/2007	\$282	2	↑
6/8/2007	\$291	9	↑
6/15/2007	\$298	7	↑
6/22/2007	\$302	4	↑
6/29/2007	\$306	4	↑
7/6/2007	\$306	0	
7/13/2007	\$303	-3	↓
7/20/2007	\$299	-4	↓
7/27/2007	\$294	-5	↓
8/3/2007	\$289	-5	↓
8/10/2007	\$280	-9	↓
8/17/2007	\$269	-11	↓
8/24/2007	\$262	-7	↓
8/31/2007	\$260	-2	↓
9/7/2007	\$258	-2	↓
9/14/2007	\$263	5	↑
9/21/2007	\$270	7	↑
9/28/2007	\$280	10	↑
10/5/2007	\$286	6	↑
10/12/2007	\$287	1	↑
10/19/2007	\$285	-2	↓
10/26/2007	\$283	-2	↓
11/2/2007	\$278	-5	↓
11/9/2007	\$275	-3	↓
11/16/2007	\$280	5	↑
11/21/2007	\$283	3	↑
11/30/2007	\$288	5	↑

Date	Price	Change	
12/29/2006	\$265		
1/5/2007	\$269	4	↑
1/12/2007	\$276	7	↑
1/19/2007	\$262	-14	↓
1/26/2007	\$246	-16	↓
2/2/2007	\$240	-6	↓
2/9/2007	\$250	10	↑
2/16/2007	\$263	13	↑
2/23/2007	\$267	4	↑
3/2/2007	\$258	-9	↓
3/9/2007	\$240	-18	↓
3/16/2007	\$242	2	↑
3/23/2007	\$242	0	
3/30/2007	\$234	-8	↓
4/6/2007	\$244	10	↑
4/13/2007	\$249	5	↑
4/20/2007	\$242	-7	↓
4/27/2007	\$233	-9	↓
5/4/2007	\$229	-4	↓
5/11/2007	\$228	-1	↓
5/18/2007	\$253	25	↑
5/25/2007	\$265	12	↑
6/1/2007	\$275	10	↑
6/8/2007	\$270	-5	↓
6/15/2007	\$285	15	↑
6/22/2007	\$291	6	↑
6/29/2007	\$289	-2	↓
7/6/2007	\$284	-5	↓
7/13/2007	\$279	-5	↓
7/20/2007	\$272	-7	↓
7/27/2007	\$259	-13	↓
8/3/2007	\$260	1	↑
8/10/2007	\$268	8	↑
8/17/2007	\$273	5	↑
8/24/2007	\$268	-5	↓
8/31/2007	\$259	-9	↓
9/7/2007	\$252	-7	↓
9/14/2007	\$239	-13	↓
9/21/2007	\$234	-5	↓
9/28/2007	\$231	-3	↓
10/5/2007	\$226	-5	↓
10/12/2007	\$225	-1	↓
10/19/2007	\$223	-2	↓
10/26/2007	\$221	-2	↓
11/2/2007	\$226	5	↑
11/9/2007	\$233	7	↑
11/16/2007	\$245	12	↑
11/21/2007	\$245	0	
11/30/2007	\$242	-3	↓

Date	Price	Change	
12/29/2006	\$265		
1/5/2007	\$268	3	↑
1/12/2007	\$270	2	↑
1/19/2007	\$270	0	
1/26/2007	\$255	-15	↓
2/2/2007	\$250	-5	↓
2/9/2007	\$255	5	↑
2/16/2007	\$265	10	↑
2/23/2007	\$270	5	↑
3/2/2007	\$270	0	
3/9/2007	\$273	3	↑
3/16/2007	\$278	5	↑
3/23/2007	\$270	-8	↓
3/30/2007	\$265	-5	↓
4/6/2007	\$265	0	
4/13/2007	\$275	10	↑
4/20/2007	\$275	0	
4/27/2007	\$255	-20	↓
5/4/2007	\$248	-7	↓
5/11/2007	\$240	-8	↓
5/18/2007	\$253	13	↑
5/25/2007	\$270	17	↑H
6/1/2007	\$272	2	↑
6/8/2007	\$278	6	↑
6/15/2007	\$285	7	↑
6/22/2007	\$295	10	↑
6/29/2007	\$295	0	
7/6/2007	\$295	0	
7/13/2007	\$290	-5	↓
7/20/2007	\$280	-10	↓
7/27/2007	\$275	-5	↓
8/3/2007	\$273	-2	↓
8/10/2007	\$270	-3	↓
8/17/2007	\$273	3	↑
8/24/2007	\$270	-3	↓
8/31/2007	\$265	-5	↓
9/7/2007	\$268	3	↑
9/14/2007	\$265	-3	↓
9/21/2007	\$255	-10	↓
9/28/2007	\$245	-10	↓
10/5/2007	\$242	-3	↓
10/12/2007	\$237	-5	↓
10/19/2007	\$220	-17	↓
10/26/2007	\$215	-5	↓
11/2/2007	\$207	-8	↓
11/9/2007	\$209	2	↑
11/16/2007	\$219	10	↑
11/21/2007	\$223	4	↑
11/30/2007	\$225	2	↑

12/7/2007	\$294	6	↑
12/14/2007	\$304	10	↑
12/21/2007	\$308	4	↑
12/28/2007	\$308	0	
1/4/2008	\$308	0	
1/11/2008	\$308	0	
1/18/2008	\$308	0	
1/25/2008	\$306	-2	↓
2/1/2008	\$304	-2	↓
2/8/2008	\$302	-2	↓
2/15/2008	\$299	-3	↓
2/22/2008	\$297	-2	↓
2/29/2008	\$295	-2	↓
3/7/2008	\$290	-5	↓
3/14/2008	\$283	-7	↓
3/21/2008	\$276	-7	↓
3/28/2008	\$270	-6	↓
4/4/2008	\$266	-4	↓
4/11/2008	\$270	4	↑
4/18/2008	\$282	12	↑
4/25/2008	\$296	14	↑
5/2/2008	\$310	14	↑H
5/9/2008	\$321	11	↑
5/16/2008	\$331	10	↑
5/23/2008	\$333	2	↑
5/30/2008	\$331	-2	↓
6/6/2008	\$327	-4	↓
6/13/2008	\$317	-10	↓
6/20/2008	\$307	-10	↓
6/27/2008	\$299	-8	↓
7/3/2008	\$294	-5	↓
7/11/2008	\$290	-4	↓
7/18/2008	\$289	-1	↓
7/25/2008	\$289	0	
8/1/2008	\$292	3	↑
8/8/2008	\$299	7	↑
8/15/2008	\$306	7	↑
8/22/2008	\$312	6	↑
8/29/2008	\$318	6	↑
9/5/2008	\$325	7	↑
9/12/2008	\$330	5	↑
9/19/2008	\$334	4	↑
9/26/2008	\$335	1	↑
10/3/2008	\$331	-4	↓
10/10/2008	\$320	-11	↓
10/17/2008	\$305	-15	↓L
10/24/2008	\$288	-17	↓L
10/31/2008	\$275	-13	↓
11/7/2008	\$266	-9	↓
11/14/2008	\$267	1	↑
11/21/2008	\$270	3	↑
11/26/2008	\$271	1	↑

12/7/2007	\$229	-13	↓
12/14/2007	\$229	0	
12/21/2007	\$225	-4	↓
12/28/2007	\$223	-2	↓
1/4/2008	\$219	-4	↓
1/11/2008	\$208	-11	↓
1/18/2008	\$201	-7	↓
1/25/2008	\$198	-3	↓
2/1/2008	\$190	-8	↓
2/8/2008	\$204	14	↑
2/15/2008	\$210	6	↑
2/22/2008	\$208	-2	↓
2/29/2008	\$203	-5	↓
3/7/2008	\$198	-5	↓
3/14/2008	\$192	-6	↓
3/21/2008	\$205	13	↑
3/28/2008	\$207	2	↑
4/4/2008	\$207	0	
4/11/2008	\$222	15	↑
4/18/2008	\$218	-4	↓
4/25/2008	\$210	-8	↓
5/2/2008	\$220	10	↑
5/9/2008	\$233	13	↑
5/16/2008	\$238	5	↑
5/23/2008	\$248	10	↑
5/30/2008	\$252	4	↑
6/6/2008	\$249	-3	↓
6/13/2008	\$238	-11	↓
6/20/2008	\$244	6	↑
6/27/2008	\$245	1	↑
7/3/2008	\$248	3	↑
7/11/2008	\$262	14	↑
7/18/2008	\$262	0	
7/25/2008	\$266	4	↑
8/1/2008	\$270	4	↑
8/8/2008	\$272	2	↑
8/15/2008	\$283	11	↑
8/22/2008	\$283	0	
8/29/2008	\$280	-3	↓
9/5/2008	\$269	-11	↓
9/12/2008	\$252	-17	↓
9/19/2008	\$233	-19	↓L
9/26/2008	\$223	-10	↓
10/3/2008	\$215	-8	↓
10/10/2008	\$199	-16	↓
10/17/2008	\$200	1	↑
10/24/2008	\$189	-11	↓
10/31/2008	\$189	0	
11/7/2008	\$191	2	↑
11/14/2008	\$189	-2	↓
11/21/2008	\$189	0	
11/26/2008	\$186	-3	↓

12/7/2007	\$227	2	↑
12/14/2007	\$227	0	
12/21/2007	\$227	0	
12/28/2007	\$225	-2	↓
1/4/2008	\$222	-3	↓
1/11/2008	\$210	-12	↓
1/18/2008	\$200	-10	↓
1/25/2008	\$195	-5	↓
2/1/2008	\$190	-5	↓
2/8/2008	\$205	15	↑
2/15/2008	\$210	5	↑
2/22/2008	\$207	-3	↓
2/29/2008	\$207	0	
3/7/2008	\$200	-7	↓
3/14/2008	\$200	0	
3/21/2008	\$200	0	
3/28/2008	\$210	10	↑
4/4/2008	\$214	4	↑
4/11/2008	\$225	11	↑
4/18/2008	\$230	5	↑
4/25/2008	\$230	0	
5/2/2008	\$233	3	↑
5/9/2008	\$240	7	↑
5/16/2008	\$245	5	↑
5/23/2008	\$250	5	↑
5/30/2008	\$250	0	
6/6/2008	\$248	-2	↓
6/13/2008	\$245	-3	↓
6/20/2008	\$247	2	↑
6/27/2008	\$245	-2	↓
7/3/2008	\$245	0	
7/11/2008	\$247	2	↑
7/18/2008	\$250	3	↑
7/25/2008	\$250	0	
8/1/2008	\$253	3	↑
8/8/2008	\$255	2	↑
8/15/2008	\$260	5	↑
8/22/2008	\$263	3	↑
8/29/2008	\$263	0	
9/5/2008	\$260	-3	↓
9/12/2008	\$240	-20	↓L
9/19/2008	\$230	-10	↓
9/26/2008	\$220	-10	↓
10/3/2008	\$205	-15	↓
10/10/2008	\$190	-15	↓
10/17/2008	\$185	-5	↓
10/24/2008	\$185	0	
10/31/2008	\$185	0	
11/7/2008	\$185	0	
11/14/2008	\$185	0	
11/21/2008	\$185	0	
11/26/2008	\$185	0	

12/5/2008	\$270	-1	↓
12/12/2008	\$260	-10	↓
12/19/2008	\$253	-7	↓
12/24/2008	\$249	-4	↓
12/31/2008	\$245	-4	↓
1/9/2009	\$240	-5	↓
1/16/2009	\$235	-5	↓
1/23/2009	\$233	-2	↓
1/30/2009	\$233	0	
2/6/2009	\$235	2	↑
2/13/2009	\$239	4	↑
2/20/2009	\$245	6	↑
2/27/2009	\$249	4	↑

12/5/2008	\$178	-8	↓
12/12/2008	\$160	-18	↓
12/19/2008	\$160	0	
12/24/2008	\$168	8	↑
12/31/2008	\$168	0	
1/9/2009	\$165	-3	↓
1/16/2009	\$153	-12	↓
1/23/2009	\$143	-10	↓
1/30/2009	\$134	-9	↓
2/6/2009	\$170	36	↑H
2/13/2009	\$168	-2	↓
2/20/2009	\$154	-14	↓
2/27/2009	\$140	-14	↓

12/5/2008	\$180	-5	↓
12/12/2008	\$170	-10	↓
12/19/2008	\$170	0	
12/24/2008	\$165	-5	↓
12/31/2008	\$165	0	
1/9/2009	\$165	0	
1/16/2009	\$162	-3	↓
1/23/2009	\$162	0	
1/30/2009	\$158	-4	↓
2/6/2009	\$165	7	↑
2/13/2009	\$170	5	↑
2/20/2009	\$170	0	
2/27/2009	\$165	-5	↓



RANDOM LENGTHS

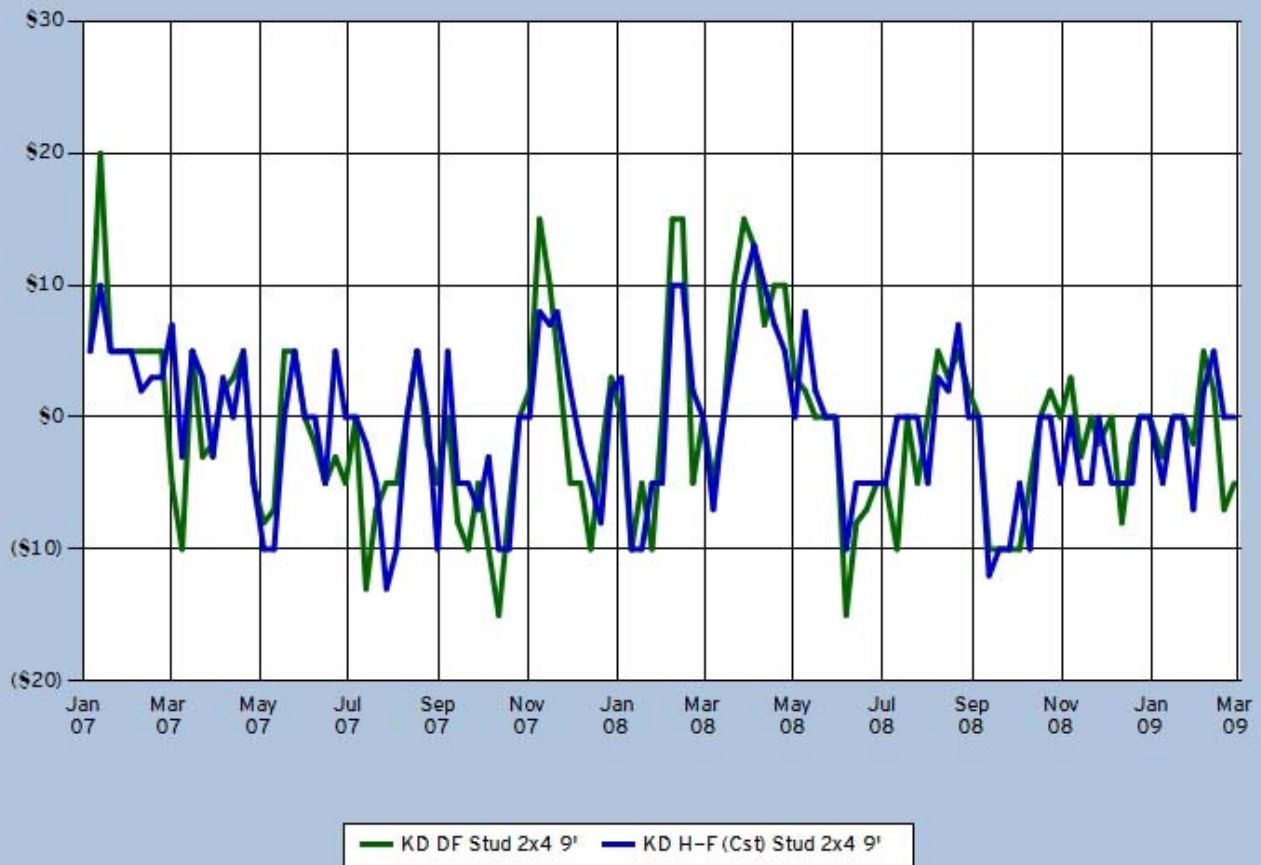
My Print

ON-DEMAND GRAPHS AND PRICE REPORTS

Report Name: !Western Species - Dry DF, H-F (C) 2x4-9 Studs
Report Type: Up/Down Report
Start Date: Friday, December 29, 2006
End Date: To Present
Template Applied: RL Default [Up/Down Report / Weekly]
Comments:
Report Items:

- Kiln dried Douglas Fir Stud 2x4 9-foot Precision End Trimmed
- Kiln dried Hem-Fir (Coast mills) Stud 2x4 9-foot Precision End Trimmed

Dry DF, H-F (C) 2x4-9 Studs



© Copyright 2009, Random Lengths, WWW.RLMYPRINT.COM

KD Douglas Fir Stud 2x4 9' PET

Date	Price	Change	
12/29/2006	\$275		
1/5/2007	\$280	5	↑
1/12/2007	\$300	20	↑H
1/19/2007	\$305	5	↑
1/26/2007	\$310	5	↑
2/2/2007	\$315	5	↑
2/9/2007	\$320	5	↑
2/16/2007	\$325	5	↑
2/23/2007	\$330	5	↑
3/2/2007	\$325	-5	↓
3/9/2007	\$315	-10	↓
3/16/2007	\$320	5	↑
3/23/2007	\$317	-3	↓
3/30/2007	\$315	-2	↓
4/6/2007	\$317	2	↑
4/13/2007	\$320	3	↑
4/20/2007	\$325	5	↑
4/27/2007	\$320	-5	↓
5/4/2007	\$312	-8	↓
5/11/2007	\$305	-7	↓
5/18/2007	\$310	5	↑
5/25/2007	\$315	5	↑
6/1/2007	\$315	0	
6/8/2007	\$313	-2	↓
6/15/2007	\$308	-5	↓
6/22/2007	\$305	-3	↓
6/29/2007	\$300	-5	↓
7/6/2007	\$300	0	
7/13/2007	\$287	-13	↓
7/20/2007	\$280	-7	↓
7/27/2007	\$275	-5	↓
8/3/2007	\$270	-5	↓
8/10/2007	\$270	0	
8/17/2007	\$275	5	↑
8/24/2007	\$273	-2	↓
8/31/2007	\$268	-5	↓
9/7/2007	\$268	0	
9/14/2007	\$260	-8	↓
9/21/2007	\$250	-10	↓
9/28/2007	\$245	-5	↓
10/5/2007	\$235	-10	↓
10/12/2007	\$220	-15	↓
10/19/2007	\$213	-7	↓
10/26/2007	\$213	0	
11/2/2007	\$215	2	↑
11/9/2007	\$230	15	↑
11/16/2007	\$240	10	↑
11/21/2007	\$245	5	↑
11/30/2007	\$240	-5	↓
12/7/2007	\$235	-5	↓

KD Hem-Fir (Coast) Stud 2x4 9' PET

Date	Price	Change	
12/29/2006	\$245		
1/5/2007	\$250	5	↑
1/12/2007	\$260	10	↑
1/19/2007	\$265	5	↑
1/26/2007	\$270	5	↑
2/2/2007	\$275	5	↑
2/9/2007	\$277	2	↑
2/16/2007	\$280	3	↑
2/23/2007	\$283	3	↑
3/2/2007	\$290	7	↑
3/9/2007	\$287	-3	↓
3/16/2007	\$292	5	↑
3/23/2007	\$295	3	↑
3/30/2007	\$292	-3	↓
4/6/2007	\$295	3	↑
4/13/2007	\$295	0	
4/20/2007	\$300	5	↑
4/27/2007	\$295	-5	↓
5/4/2007	\$285	-10	↓
5/11/2007	\$275	-10	↓
5/18/2007	\$275	0	
5/25/2007	\$280	5	↑
6/1/2007	\$280	0	
6/8/2007	\$280	0	
6/15/2007	\$275	-5	↓
6/22/2007	\$280	5	↑
6/29/2007	\$280	0	
7/6/2007	\$280	0	
7/13/2007	\$278	-2	↓
7/20/2007	\$273	-5	↓
7/27/2007	\$260	-13	↓L
8/3/2007	\$250	-10	↓
8/10/2007	\$250	0	
8/17/2007	\$255	5	↑
8/24/2007	\$255	0	
8/31/2007	\$245	-10	↓
9/7/2007	\$250	5	↑
9/14/2007	\$245	-5	↓
9/21/2007	\$240	-5	↓
9/28/2007	\$233	-7	↓
10/5/2007	\$230	-3	↓
10/12/2007	\$220	-10	↓
10/19/2007	\$210	-10	↓
10/26/2007	\$210	0	
11/2/2007	\$210	0	
11/9/2007	\$218	8	↑
11/16/2007	\$225	7	↑
11/21/2007	\$233	8	↑
11/30/2007	\$235	2	↑
12/7/2007	\$233	-2	↓

12/14/2007	\$225	-10	↓
12/21/2007	\$222	-3	↓
12/28/2007	\$225	3	↑
1/4/2008	\$225	0	
1/11/2008	\$215	-10	↓
1/18/2008	\$210	-5	↓
1/25/2008	\$200	-10	↓
2/1/2008	\$200	0	
2/8/2008	\$215	15	↑
2/15/2008	\$230	15	↑
2/22/2008	\$225	-5	↓
2/29/2008	\$225	0	
3/7/2008	\$220	-5	↓
3/14/2008	\$220	0	
3/21/2008	\$230	10	↑
3/28/2008	\$245	15	↑
4/4/2008	\$258	13	↑
4/11/2008	\$265	7	↑
4/18/2008	\$275	10	↑
4/25/2008	\$285	10	↑
5/2/2008	\$288	3	↑
5/9/2008	\$290	2	↑
5/16/2008	\$290	0	
5/23/2008	\$290	0	
5/30/2008	\$290	0	
6/6/2008	\$275	-15	↓L
6/13/2008	\$267	-8	↓
6/20/2008	\$260	-7	↓
6/27/2008	\$255	-5	↓
7/3/2008	\$250	-5	↓
7/11/2008	\$240	-10	↓
7/18/2008	\$240	0	
7/25/2008	\$235	-5	↓
8/1/2008	\$235	0	
8/8/2008	\$240	5	↑
8/15/2008	\$243	3	↑
8/22/2008	\$248	5	↑
8/29/2008	\$250	2	↑
9/5/2008	\$250	0	
9/12/2008	\$240	-10	↓
9/19/2008	\$230	-10	↓
9/26/2008	\$220	-10	↓
10/3/2008	\$210	-10	↓
10/10/2008	\$205	-5	↓
10/17/2008	\$205	0	
10/24/2008	\$207	2	↑
10/31/2008	\$207	0	
11/7/2008	\$210	3	↑
11/14/2008	\$207	-3	↓
11/21/2008	\$207	0	
11/26/2008	\$205	-2	↓
12/5/2008	\$205	0	

12/14/2007	\$228	-5	↓
12/21/2007	\$220	-8	↓
12/28/2007	\$222	2	↑
1/4/2008	\$225	3	↑
1/11/2008	\$215	-10	↓
1/18/2008	\$205	-10	↓
1/25/2008	\$200	-5	↓
2/1/2008	\$195	-5	↓
2/8/2008	\$205	10	↑
2/15/2008	\$215	10	↑
2/22/2008	\$217	2	↑
2/29/2008	\$217	0	
3/7/2008	\$210	-7	↓
3/14/2008	\$210	0	
3/21/2008	\$215	5	↑
3/28/2008	\$225	10	↑
4/4/2008	\$238	13	↑H
4/11/2008	\$248	10	↑
4/18/2008	\$255	7	↑
4/25/2008	\$260	5	↑
5/2/2008	\$260	0	
5/9/2008	\$268	8	↑
5/16/2008	\$270	2	↑
5/23/2008	\$270	0	
5/30/2008	\$270	0	
6/6/2008	\$260	-10	↓
6/13/2008	\$255	-5	↓
6/20/2008	\$250	-5	↓
6/27/2008	\$245	-5	↓
7/3/2008	\$240	-5	↓
7/11/2008	\$240	0	
7/18/2008	\$240	0	
7/25/2008	\$240	0	
8/1/2008	\$235	-5	↓
8/8/2008	\$238	3	↑
8/15/2008	\$240	2	↑
8/22/2008	\$247	7	↑
8/29/2008	\$247	0	
9/5/2008	\$247	0	
9/12/2008	\$235	-12	↓
9/19/2008	\$225	-10	↓
9/26/2008	\$215	-10	↓
10/3/2008	\$210	-5	↓
10/10/2008	\$200	-10	↓
10/17/2008	\$200	0	
10/24/2008	\$200	0	
10/31/2008	\$195	-5	↓
11/7/2008	\$195	0	
11/14/2008	\$190	-5	↓
11/21/2008	\$185	-5	↓
11/26/2008	\$185	0	
12/5/2008	\$180	-5	↓

12/12/2008	\$197	-8	↓
12/19/2008	\$195	-2	↓
12/24/2008	\$195	0	
12/31/2008	\$195	0	
1/9/2009	\$192	-3	↓
1/16/2009	\$192	0	
1/23/2009	\$192	0	
1/30/2009	\$190	-2	↓
2/6/2009	\$195	5	↑
2/13/2009	\$197	2	↑
2/20/2009	\$190	-7	↓
2/27/2009	\$185	-5	↓

12/12/2008	\$175	-5	↓
12/19/2008	\$170	-5	↓
12/24/2008	\$170	0	
12/31/2008	\$170	0	
1/9/2009	\$165	-5	↓
1/16/2009	\$165	0	
1/23/2009	\$165	0	
1/30/2009	\$158	-7	↓
2/6/2009	\$160	2	↑
2/13/2009	\$165	5	↑
2/20/2009	\$165	0	
2/27/2009	\$165	0	

© Copyright 2009, Random Lengths Publications, Inc. PO Box 867 Eugene, OR 97440-0867 | 450 Country Club Road #240 Eugene, OR 97401
 Phone Toll-Free in U.S. and Canada 888.686.9925, or Ph: 541.686.9925 | Fax Toll-Free in U.S. and Canada 888.874.7979, or Fax: 541.686.9629
 Contact us! Support available 8am-5pm Pacific Time | www.randomlengths.com | Website design by View Design Inc.