

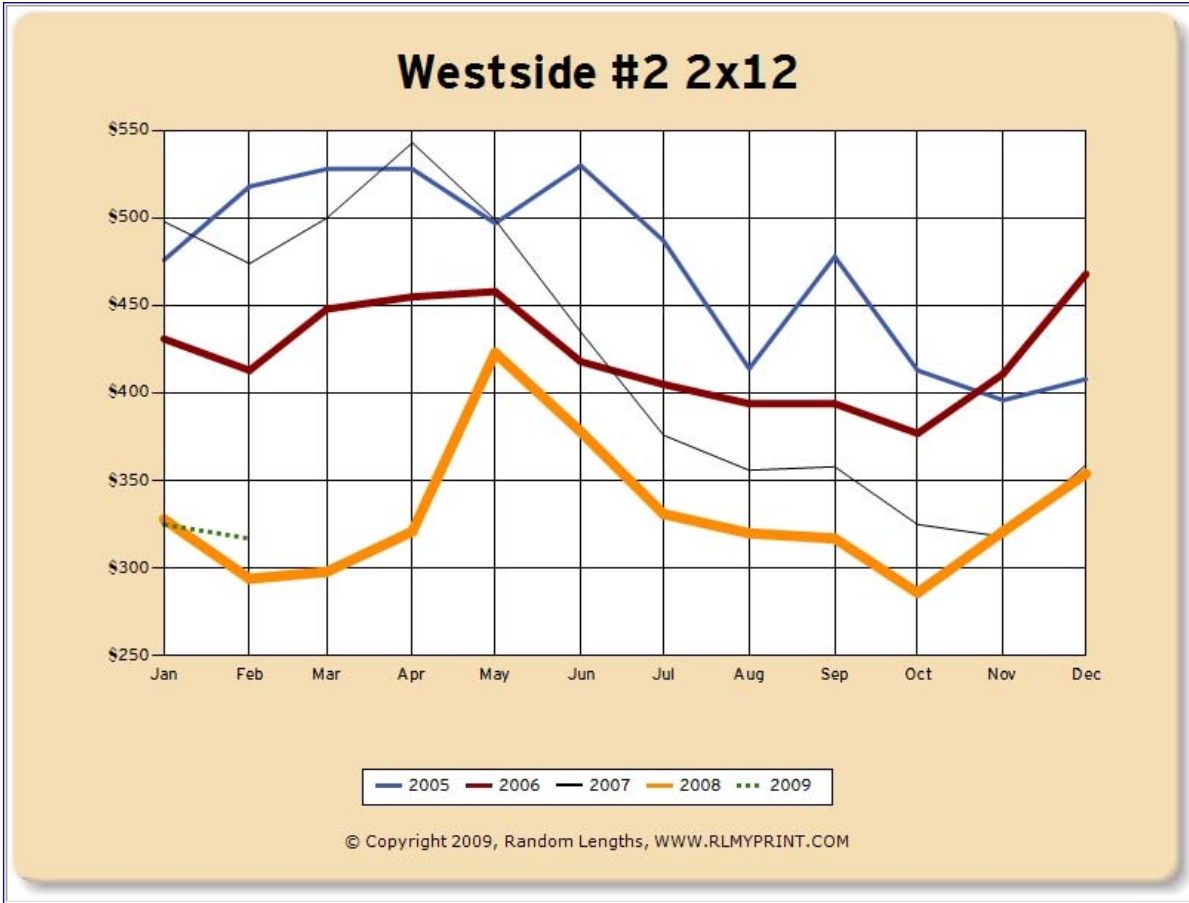


RANDOM LENGTHS

# My Print

ON-DEMAND GRAPHS AND PRICE REPORTS

## Kiln dried Dimension Southern Pine (West) #2 2x12 random length 2005 to 2009



### KD S Pine (West) #2 2x12 random

Month	2005		2006		2007		2008		2009		Average Change
	Price	Change	Price	Change	Price	Change	Price	Change	Price	Change	
Jan	\$476	\$0	\$431	\$23	\$498	\$30	\$328	(\$31)	\$325	(\$29)	(\$1.40)
Feb	\$518	\$42	\$413	(\$18)	\$474	(\$24)	\$294	(\$34)	\$317	(\$8)	(\$8.40)
Mar	\$528	\$10	\$448	\$35	\$500	\$26	\$298	\$4			\$18.75
Apr	\$528	\$0	\$455	\$7	\$543	\$43	\$321	\$23			\$18.25
May	\$497	(\$31)	\$458	\$3	\$499	(\$44)	\$423	\$102			\$7.50
Jun	\$530	\$33	\$418	(\$40)	\$435	(\$64)	\$378	(\$45)			(\$29.00)
Jul	\$487	(\$43)	\$405	(\$13)	\$376	(\$59)	\$331	(\$47)			(\$40.50)
Aug	\$414	(\$73)	\$394	(\$11)	\$356	(\$20)	\$320	(\$11)			(\$28.75)
Sep	\$478	\$64	\$394	\$0	\$358	\$2	\$317	(\$3)			\$15.75
Oct	\$413	(\$65)	\$377	(\$17)	\$325	(\$33)	\$286	(\$31)			(\$36.50)
Nov	\$396	(\$17)	\$411	\$34	\$318	(\$7)	\$321	\$35			\$11.25
Dec	\$408	\$12	\$468	\$57	\$359	\$41	\$354	\$33			\$35.75

© Copyright 2009, Random Lengths Publications, Inc. PO Box 867 Eugene, OR 97440-0867 | 450 Country Club Road #240 Eugene, OR 97401  
 Phone Toll-Free in U.S. and Canada 888.686.9925, or Ph: 541.686.9925 | Fax Toll-Free in U.S. and Canada 888.874.7979, or Fax: 541.686.9629  
 Contact us! Support available 8am-5pm Pacific Time | [www.randomlengths.com](http://www.randomlengths.com) | Website design by View Design Inc.  
 1.7.1



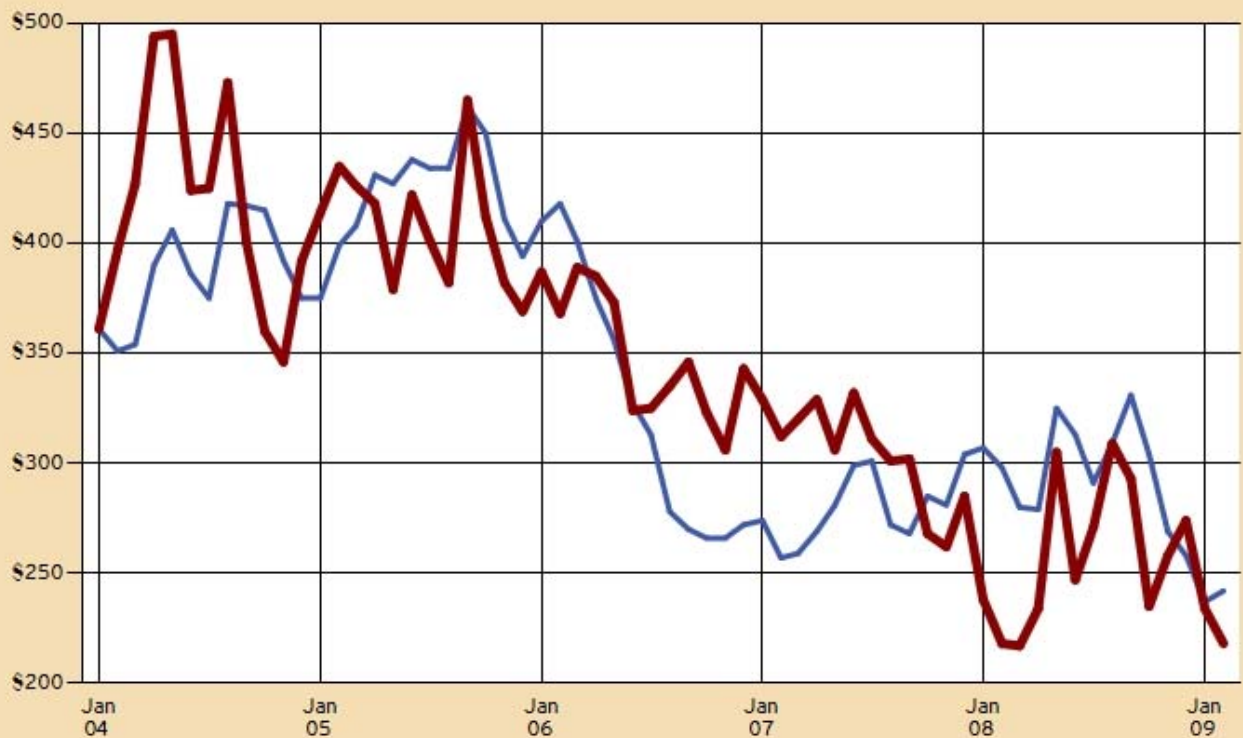
# RANDOM LENGTHS My Print

ON-DEMAND GRAPHS AND PRICE REPORTS

**Report Name:** !Southern Pine - Westside #2 2x4 vs. 2x10  
**Report Type:** Custom Report  
**Start Date:** Thursday, January 01, 2004  
**End Date:** To Present  
**Template Applied:** RL Default [Custom Report / Monthly]  
**Comments:**  
**Report Items:**

- Kiln dried Dimension Southern Pine (West) #2 2x4 random length
- Kiln dried Dimension Southern Pine (West) #2 2x10 random length

## Westside SYP #2 2x4 vs. 2x10



— KD SYP (West) #2 2x4 RL — KD SYP (West) #2 2x10 RL

© Copyright 2009, Random Lengths, WWW.RLMYPRINT.COM

KD S Pine (West) #2 2x4 random

KD S Pine (West) #2 2x10 random

Month	Price	Chg		Month	Price	Chg		Month	Difference
01/2004	\$361	\$0		01/2004	\$361	\$0		01/2004	\$0
02/2004	\$351	(\$10)	↓	02/2004	\$397	\$36	↑	02/2004	\$46
03/2004	\$354	\$3	↑	03/2004	\$427	\$30	↑	03/2004	\$73
04/2004	\$390	\$36	↑	04/2004	\$494	\$67	↑	04/2004	\$104
05/2004	\$406	\$16	↑	05/2004	\$495	\$1	↑H	05/2004	\$89
06/2004	\$386	(\$20)	↓	06/2004	\$424	(\$71)	↓	06/2004	\$38
07/2004	\$375	(\$11)	↓	07/2004	\$425	\$1	↑	07/2004	\$50
08/2004	\$418	\$43	↑	08/2004	\$473	\$48	↑	08/2004	\$55
09/2004	\$417	(\$1)	↓	09/2004	\$400	(\$73)	↓	09/2004	(\$17)
10/2004	\$415	(\$2)	↓	10/2004	\$360	(\$40)	↓	10/2004	(\$55)
11/2004	\$392	(\$23)	↓	11/2004	\$346	(\$14)	↓	11/2004	(\$46)
12/2004	\$375	(\$17)	↓	12/2004	\$392	\$46	↑	12/2004	\$17
01/2005	\$375	\$0		01/2005	\$414	\$22	↑	01/2005	\$39
02/2005	\$399	\$24	↑	02/2005	\$435	\$21	↑	02/2005	\$36
03/2005	\$408	\$9	↑	03/2005	\$426	(\$9)	↓	03/2005	\$18
04/2005	\$431	\$23	↑	04/2005	\$418	(\$8)	↓	04/2005	(\$13)
05/2005	\$427	(\$4)	↓	05/2005	\$379	(\$39)	↓	05/2005	(\$48)
06/2005	\$438	\$11	↑	06/2005	\$422	\$43	↑	06/2005	(\$16)
07/2005	\$434	(\$4)	↓	07/2005	\$401	(\$21)	↓	07/2005	(\$33)
08/2005	\$434	\$0		08/2005	\$382	(\$19)	↓	08/2005	(\$52)
09/2005	\$462	\$28	↑H	09/2005	\$465	\$83	↑	09/2005	\$3
10/2005	\$450	(\$12)	↓	10/2005	\$412	(\$53)	↓	10/2005	(\$38)
11/2005	\$411	(\$39)	↓	11/2005	\$382	(\$30)	↓	11/2005	(\$29)
12/2005	\$394	(\$17)	↓	12/2005	\$369	(\$13)	↓	12/2005	(\$25)
01/2006	\$410	\$16	↑	01/2006	\$387	\$18	↑	01/2006	(\$23)
02/2006	\$418	\$8	↑	02/2006	\$368	(\$19)	↓	02/2006	(\$50)
03/2006	\$401	(\$17)	↓	03/2006	\$389	\$21	↑	03/2006	(\$12)
04/2006	\$375	(\$26)	↓	04/2006	\$385	(\$4)	↓	04/2006	\$10
05/2006	\$356	(\$19)	↓	05/2006	\$373	(\$12)	↓	05/2006	\$17
06/2006	\$327	(\$29)	↓	06/2006	\$324	(\$49)	↓	06/2006	(\$3)
07/2006	\$313	(\$14)	↓	07/2006	\$325	\$1	↑	07/2006	\$12
08/2006	\$278	(\$35)	↓	08/2006	\$335	\$10	↑	08/2006	\$57
09/2006	\$270	(\$8)	↓	09/2006	\$346	\$11	↑	09/2006	\$76
10/2006	\$266	(\$4)	↓	10/2006	\$323	(\$23)	↓	10/2006	\$57
11/2006	\$266	\$0		11/2006	\$306	(\$17)	↓	11/2006	\$40
12/2006	\$272	\$6	↑	12/2006	\$343	\$37	↑	12/2006	\$71
01/2007	\$274	\$2	↑	01/2007	\$329	(\$14)	↓	01/2007	\$55
02/2007	\$257	(\$17)	↓	02/2007	\$312	(\$17)	↓	02/2007	\$55
03/2007	\$259	\$2	↑	03/2007	\$320	\$8	↑	03/2007	\$61
04/2007	\$269	\$10	↑	04/2007	\$329	\$9	↑	04/2007	\$60
05/2007	\$281	\$12	↑	05/2007	\$306	(\$23)	↓	05/2007	\$25
06/2007	\$299	\$18	↑	06/2007	\$332	\$26	↑	06/2007	\$33
07/2007	\$301	\$2	↑	07/2007	\$311	(\$21)	↓	07/2007	\$10
08/2007	\$272	(\$29)	↓	08/2007	\$301	(\$10)	↓	08/2007	\$29
09/2007	\$268	(\$4)	↓	09/2007	\$302	\$1	↑	09/2007	\$34
10/2007	\$285	\$17	↑	10/2007	\$268	(\$34)	↓	10/2007	(\$17)
11/2007	\$281	(\$4)	↓	11/2007	\$262	(\$6)	↓	11/2007	(\$19)
12/2007	\$304	\$23	↑	12/2007	\$285	\$23	↑	12/2007	(\$19)
01/2008	\$307	\$3	↑	01/2008	\$238	(\$47)	↓	01/2008	(\$69)
02/2008	\$298	(\$9)	↓	02/2008	\$218	(\$20)	↓	02/2008	(\$80)

03/2008	\$280	(\$18)	↓
04/2008	\$279	(\$1)	↓
05/2008	\$325	\$46	↑
06/2008	\$313	(\$12)	↓
07/2008	\$291	(\$22)	↓
08/2008	\$309	\$18	↑
09/2008	\$331	\$22	↑
10/2008	\$304	(\$27)	↓
11/2008	\$269	(\$35)	↓
12/2008	\$258	(\$11)	↓
01/2009	\$237	(\$21)	↓L
02/2009	\$242	\$5	↑

03/2008	\$217	(\$1)	↓L
04/2008	\$234	\$17	↑
05/2008	\$305	\$71	↑
06/2008	\$247	(\$58)	↓
07/2008	\$271	\$24	↑
08/2008	\$309	\$38	↑
09/2008	\$293	(\$16)	↓
10/2008	\$235	(\$58)	↓
11/2008	\$258	\$23	↑
12/2008	\$274	\$16	↑
01/2009	\$234	(\$40)	↓
02/2009	\$218	(\$16)	↓

03/2008	(\$63)
04/2008	(\$45)
05/2008	(\$20)
06/2008	(\$66)
07/2008	(\$20)
08/2008	\$0
09/2008	(\$38)
10/2008	(\$69)
11/2008	(\$11)
12/2008	\$16
01/2009	(\$3)
02/2009	(\$24)



RANDOM LENGTHS

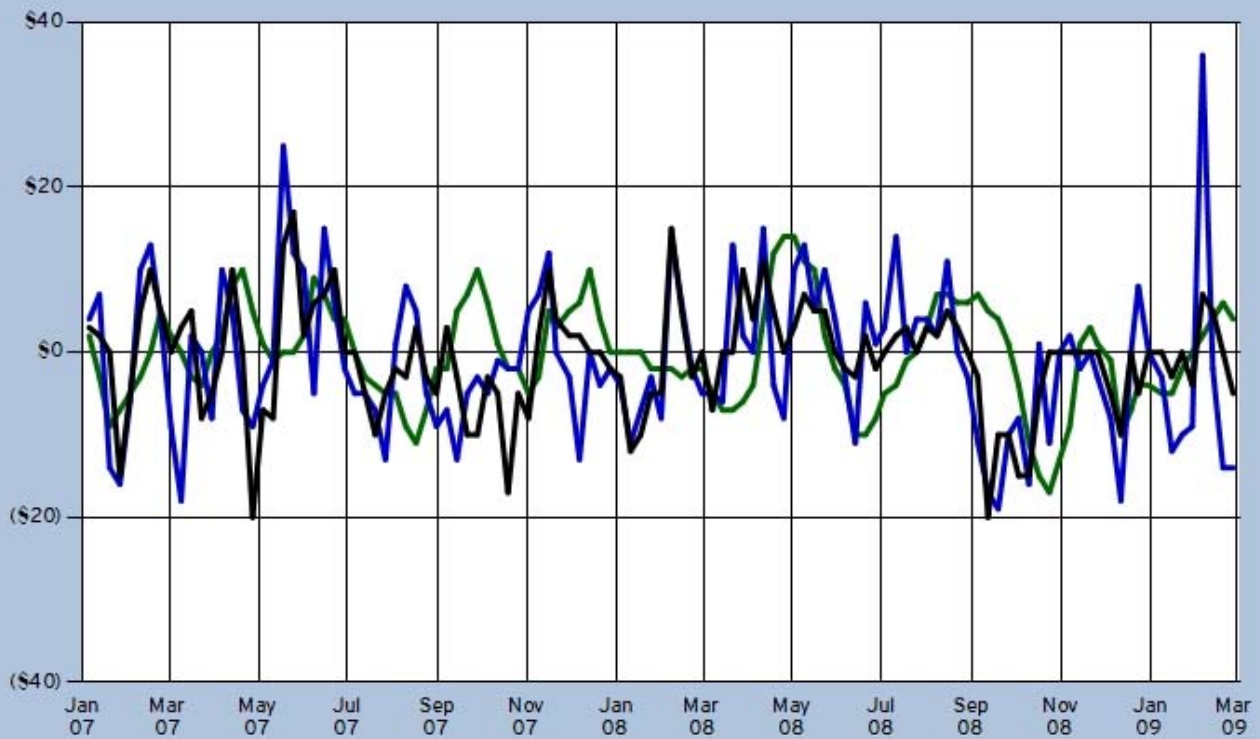
# My Print

ON-DEMAND GRAPHS AND PRICE REPORTS

**Report Name:** !Southern Pine - SYP, W-SPF, H-F (C)  
**Report Type:** Up/Down Report  
**Start Date:** Friday, December 29, 2006  
**End Date:** To Present  
**Template Applied:** RL Default [Up/Down Report / Weekly]  
**Comments:**  
**Report Items:**

- Kiln dried Dimension Southern Pine (West) #2 2x4 random length
- Kiln dried Dimension Western Spruce-Pine-Fir #2 and Better 2x4 random length
- Kiln dried Dimension Hem-Fir (Coast mills) #2 and Better 2x4 random length

## SYP, W-SPF, H-F (C)



— KD SYP (West) #2 2x4 RL — KD WSPF 2&B 2x4 RL — KD H-F (Cst) 2&B 2x4 RL

KD S Pine (West) #2 2x4 random

KD W S-P-F #2&Btr 2x4 random

KD Hem-Fir (Coast) #2&Btr 2x4 random

Date	Price	Change	
12/29/2006	\$280		
1/5/2007	\$282	2	↑
1/12/2007	\$279	-3	↓
1/19/2007	\$270	-9	↓
1/26/2007	\$263	-7	↓
2/2/2007	\$258	-5	↓
2/9/2007	\$255	-3	↓
2/16/2007	\$255	0	
2/23/2007	\$260	5	↑
3/2/2007	\$262	2	↑
3/9/2007	\$262	0	
3/16/2007	\$259	-3	↓
3/23/2007	\$255	-4	↓
3/30/2007	\$255	0	
4/6/2007	\$257	2	↑
4/13/2007	\$265	8	↑
4/20/2007	\$275	10	↑
4/27/2007	\$280	5	↑
5/4/2007	\$281	1	↑
5/11/2007	\$280	-1	↓
5/18/2007	\$280	0	
5/25/2007	\$280	0	
6/1/2007	\$282	2	↑
6/8/2007	\$291	9	↑
6/15/2007	\$298	7	↑
6/22/2007	\$302	4	↑
6/29/2007	\$306	4	↑
7/6/2007	\$306	0	
7/13/2007	\$303	-3	↓
7/20/2007	\$299	-4	↓
7/27/2007	\$294	-5	↓
8/3/2007	\$289	-5	↓
8/10/2007	\$280	-9	↓
8/17/2007	\$269	-11	↓
8/24/2007	\$262	-7	↓
8/31/2007	\$260	-2	↓
9/7/2007	\$258	-2	↓
9/14/2007	\$263	5	↑
9/21/2007	\$270	7	↑
9/28/2007	\$280	10	↑
10/5/2007	\$286	6	↑
10/12/2007	\$287	1	↑
10/19/2007	\$285	-2	↓
10/26/2007	\$283	-2	↓
11/2/2007	\$278	-5	↓
11/9/2007	\$275	-3	↓
11/16/2007	\$280	5	↑
11/21/2007	\$283	3	↑
11/30/2007	\$288	5	↑

Date	Price	Change	
12/29/2006	\$265		
1/5/2007	\$269	4	↑
1/12/2007	\$276	7	↑
1/19/2007	\$262	-14	↓
1/26/2007	\$246	-16	↓
2/2/2007	\$240	-6	↓
2/9/2007	\$250	10	↑
2/16/2007	\$263	13	↑
2/23/2007	\$267	4	↑
3/2/2007	\$258	-9	↓
3/9/2007	\$240	-18	↓
3/16/2007	\$242	2	↑
3/23/2007	\$242	0	
3/30/2007	\$234	-8	↓
4/6/2007	\$244	10	↑
4/13/2007	\$249	5	↑
4/20/2007	\$242	-7	↓
4/27/2007	\$233	-9	↓
5/4/2007	\$229	-4	↓
5/11/2007	\$228	-1	↓
5/18/2007	\$253	25	↑
5/25/2007	\$265	12	↑
6/1/2007	\$275	10	↑
6/8/2007	\$270	-5	↓
6/15/2007	\$285	15	↑
6/22/2007	\$291	6	↑
6/29/2007	\$289	-2	↓
7/6/2007	\$284	-5	↓
7/13/2007	\$279	-5	↓
7/20/2007	\$272	-7	↓
7/27/2007	\$259	-13	↓
8/3/2007	\$260	1	↑
8/10/2007	\$268	8	↑
8/17/2007	\$273	5	↑
8/24/2007	\$268	-5	↓
8/31/2007	\$259	-9	↓
9/7/2007	\$252	-7	↓
9/14/2007	\$239	-13	↓
9/21/2007	\$234	-5	↓
9/28/2007	\$231	-3	↓
10/5/2007	\$226	-5	↓
10/12/2007	\$225	-1	↓
10/19/2007	\$223	-2	↓
10/26/2007	\$221	-2	↓
11/2/2007	\$226	5	↑
11/9/2007	\$233	7	↑
11/16/2007	\$245	12	↑
11/21/2007	\$245	0	
11/30/2007	\$242	-3	↓

Date	Price	Change	
12/29/2006	\$265		
1/5/2007	\$268	3	↑
1/12/2007	\$270	2	↑
1/19/2007	\$270	0	
1/26/2007	\$255	-15	↓
2/2/2007	\$250	-5	↓
2/9/2007	\$255	5	↑
2/16/2007	\$265	10	↑
2/23/2007	\$270	5	↑
3/2/2007	\$270	0	
3/9/2007	\$273	3	↑
3/16/2007	\$278	5	↑
3/23/2007	\$270	-8	↓
3/30/2007	\$265	-5	↓
4/6/2007	\$265	0	
4/13/2007	\$275	10	↑
4/20/2007	\$275	0	
4/27/2007	\$255	-20	↓
5/4/2007	\$248	-7	↓
5/11/2007	\$240	-8	↓
5/18/2007	\$253	13	↑
5/25/2007	\$270	17	↑H
6/1/2007	\$272	2	↑
6/8/2007	\$278	6	↑
6/15/2007	\$285	7	↑
6/22/2007	\$295	10	↑
6/29/2007	\$295	0	
7/6/2007	\$295	0	
7/13/2007	\$290	-5	↓
7/20/2007	\$280	-10	↓
7/27/2007	\$275	-5	↓
8/3/2007	\$273	-2	↓
8/10/2007	\$270	-3	↓
8/17/2007	\$273	3	↑
8/24/2007	\$270	-3	↓
8/31/2007	\$265	-5	↓
9/7/2007	\$268	3	↑
9/14/2007	\$265	-3	↓
9/21/2007	\$255	-10	↓
9/28/2007	\$245	-10	↓
10/5/2007	\$242	-3	↓
10/12/2007	\$237	-5	↓
10/19/2007	\$220	-17	↓
10/26/2007	\$215	-5	↓
11/2/2007	\$207	-8	↓
11/9/2007	\$209	2	↑
11/16/2007	\$219	10	↑
11/21/2007	\$223	4	↑
11/30/2007	\$225	2	↑

12/7/2007	\$294	6	↑
12/14/2007	\$304	10	↑
12/21/2007	\$308	4	↑
12/28/2007	\$308	0	
1/4/2008	\$308	0	
1/11/2008	\$308	0	
1/18/2008	\$308	0	
1/25/2008	\$306	-2	↓
2/1/2008	\$304	-2	↓
2/8/2008	\$302	-2	↓
2/15/2008	\$299	-3	↓
2/22/2008	\$297	-2	↓
2/29/2008	\$295	-2	↓
3/7/2008	\$290	-5	↓
3/14/2008	\$283	-7	↓
3/21/2008	\$276	-7	↓
3/28/2008	\$270	-6	↓
4/4/2008	\$266	-4	↓
4/11/2008	\$270	4	↑
4/18/2008	\$282	12	↑
4/25/2008	\$296	14	↑
5/2/2008	\$310	14	↑H
5/9/2008	\$321	11	↑
5/16/2008	\$331	10	↑
5/23/2008	\$333	2	↑
5/30/2008	\$331	-2	↓
6/6/2008	\$327	-4	↓
6/13/2008	\$317	-10	↓
6/20/2008	\$307	-10	↓
6/27/2008	\$299	-8	↓
7/3/2008	\$294	-5	↓
7/11/2008	\$290	-4	↓
7/18/2008	\$289	-1	↓
7/25/2008	\$289	0	
8/1/2008	\$292	3	↑
8/8/2008	\$299	7	↑
8/15/2008	\$306	7	↑
8/22/2008	\$312	6	↑
8/29/2008	\$318	6	↑
9/5/2008	\$325	7	↑
9/12/2008	\$330	5	↑
9/19/2008	\$334	4	↑
9/26/2008	\$335	1	↑
10/3/2008	\$331	-4	↓
10/10/2008	\$320	-11	↓
10/17/2008	\$305	-15	↓L
10/24/2008	\$288	-17	↓L
10/31/2008	\$275	-13	↓
11/7/2008	\$266	-9	↓
11/14/2008	\$267	1	↑
11/21/2008	\$270	3	↑
11/26/2008	\$271	1	↑

12/7/2007	\$229	-13	↓
12/14/2007	\$229	0	
12/21/2007	\$225	-4	↓
12/28/2007	\$223	-2	↓
1/4/2008	\$219	-4	↓
1/11/2008	\$208	-11	↓
1/18/2008	\$201	-7	↓
1/25/2008	\$198	-3	↓
2/1/2008	\$190	-8	↓
2/8/2008	\$204	14	↑
2/15/2008	\$210	6	↑
2/22/2008	\$208	-2	↓
2/29/2008	\$203	-5	↓
3/7/2008	\$198	-5	↓
3/14/2008	\$192	-6	↓
3/21/2008	\$205	13	↑
3/28/2008	\$207	2	↑
4/4/2008	\$207	0	
4/11/2008	\$222	15	↑
4/18/2008	\$218	-4	↓
4/25/2008	\$210	-8	↓
5/2/2008	\$220	10	↑
5/9/2008	\$233	13	↑
5/16/2008	\$238	5	↑
5/23/2008	\$248	10	↑
5/30/2008	\$252	4	↑
6/6/2008	\$249	-3	↓
6/13/2008	\$238	-11	↓
6/20/2008	\$244	6	↑
6/27/2008	\$245	1	↑
7/3/2008	\$248	3	↑
7/11/2008	\$262	14	↑
7/18/2008	\$262	0	
7/25/2008	\$266	4	↑
8/1/2008	\$270	4	↑
8/8/2008	\$272	2	↑
8/15/2008	\$283	11	↑
8/22/2008	\$283	0	
8/29/2008	\$280	-3	↓
9/5/2008	\$269	-11	↓
9/12/2008	\$252	-17	↓
9/19/2008	\$233	-19	↓L
9/26/2008	\$223	-10	↓
10/3/2008	\$215	-8	↓
10/10/2008	\$199	-16	↓
10/17/2008	\$200	1	↑
10/24/2008	\$189	-11	↓
10/31/2008	\$189	0	
11/7/2008	\$191	2	↑
11/14/2008	\$189	-2	↓
11/21/2008	\$189	0	
11/26/2008	\$186	-3	↓

12/7/2007	\$227	2	↑
12/14/2007	\$227	0	
12/21/2007	\$227	0	
12/28/2007	\$225	-2	↓
1/4/2008	\$222	-3	↓
1/11/2008	\$210	-12	↓
1/18/2008	\$200	-10	↓
1/25/2008	\$195	-5	↓
2/1/2008	\$190	-5	↓
2/8/2008	\$205	15	↑
2/15/2008	\$210	5	↑
2/22/2008	\$207	-3	↓
2/29/2008	\$207	0	
3/7/2008	\$200	-7	↓
3/14/2008	\$200	0	
3/21/2008	\$200	0	
3/28/2008	\$210	10	↑
4/4/2008	\$214	4	↑
4/11/2008	\$225	11	↑
4/18/2008	\$230	5	↑
4/25/2008	\$230	0	
5/2/2008	\$233	3	↑
5/9/2008	\$240	7	↑
5/16/2008	\$245	5	↑
5/23/2008	\$250	5	↑
5/30/2008	\$250	0	
6/6/2008	\$248	-2	↓
6/13/2008	\$245	-3	↓
6/20/2008	\$247	2	↑
6/27/2008	\$245	-2	↓
7/3/2008	\$245	0	
7/11/2008	\$247	2	↑
7/18/2008	\$250	3	↑
7/25/2008	\$250	0	
8/1/2008	\$253	3	↑
8/8/2008	\$255	2	↑
8/15/2008	\$260	5	↑
8/22/2008	\$263	3	↑
8/29/2008	\$263	0	
9/5/2008	\$260	-3	↓
9/12/2008	\$240	-20	↓L
9/19/2008	\$230	-10	↓
9/26/2008	\$220	-10	↓
10/3/2008	\$205	-15	↓
10/10/2008	\$190	-15	↓
10/17/2008	\$185	-5	↓
10/24/2008	\$185	0	
10/31/2008	\$185	0	
11/7/2008	\$185	0	
11/14/2008	\$185	0	
11/21/2008	\$185	0	
11/26/2008	\$185	0	



12/5/2008	\$270	-1	↓
12/12/2008	\$260	-10	↓
12/19/2008	\$253	-7	↓
12/24/2008	\$249	-4	↓
12/31/2008	\$245	-4	↓
1/9/2009	\$240	-5	↓
1/16/2009	\$235	-5	↓
1/23/2009	\$233	-2	↓
1/30/2009	\$233	0	
2/6/2009	\$235	2	↑
2/13/2009	\$239	4	↑
2/20/2009	\$245	6	↑
2/27/2009	\$249	4	↑

12/5/2008	\$178	-8	↓
12/12/2008	\$160	-18	↓
12/19/2008	\$160	0	
12/24/2008	\$168	8	↑
12/31/2008	\$168	0	
1/9/2009	\$165	-3	↓
1/16/2009	\$153	-12	↓
1/23/2009	\$143	-10	↓
1/30/2009	\$134	-9	↓
2/6/2009	\$170	36	↑H
2/13/2009	\$168	-2	↓
2/20/2009	\$154	-14	↓
2/27/2009	\$140	-14	↓

12/5/2008	\$180	-5	↓
12/12/2008	\$170	-10	↓
12/19/2008	\$170	0	
12/24/2008	\$165	-5	↓
12/31/2008	\$165	0	
1/9/2009	\$165	0	
1/16/2009	\$162	-3	↓
1/23/2009	\$162	0	
1/30/2009	\$158	-4	↓
2/6/2009	\$165	7	↑
2/13/2009	\$170	5	↑
2/20/2009	\$170	0	
2/27/2009	\$165	-5	↓



RANDOM LENGTHS

# My Print

ON-DEMAND GRAPHS AND PRICE REPORTS

## Treated Southern Pine #2 4x4 16-foot \*

### MONTHLY AVERAGES

Year	Jan	Feb	Mar	Apr	May	Jun	Jul	Aug	Sep	Oct	Nov	Dec	Yearly Average
2004	\$580	\$566	\$565	\$596	\$620	\$581	\$515	\$501	\$511	\$534	\$573	\$585	\$561
2005	\$595	\$638	\$696	\$678	\$613	\$633	\$659	\$636	\$587	\$598	\$576	\$624	\$628
2006	\$666	\$644	\$670	\$694	\$666	\$585	\$486	\$453	\$448	\$429	\$464	\$518	\$560
2007	\$560	\$535	\$519	\$491	\$464	\$444	\$464	\$448	\$446	\$478	\$471	\$458	\$482
2008	\$466	\$499	\$533	\$494	\$522	\$558	\$504	\$474	\$484	\$458	\$450	\$498	\$495
2009	\$482	\$458											\$470

### FIVE-YEAR TRENDS

#### #2 4x4 #2 16-foot



© Copyright 2009, Random Lengths, WWW.RLMYPRINT.COM

## 5-YEAR MONTHLY AVERAGES

	Jan	Feb	Mar	Apr	May	Jun	Jul	Aug	Sep	Oct	Nov	Dec
04-08	\$573	\$576	\$597	\$591	\$577	\$560	\$526	\$502	\$495	\$499	\$507	\$537
05-09	\$554	\$555										

\* Prior to January 2004, prices are for CCA-treated lumber (retired item code LBTJ).

© Copyright 2009, Random Lengths Publications, Inc. PO Box 867 Eugene, OR 97440-0867 | 450 Country Club Road #240 Eugene, OR 97401  
Phone Toll-Free in U.S. and Canada 888.686.9925, or Ph: 541.686.9925 | Fax Toll-Free in U.S. and Canada 888.874.7979, or Fax: 541.686.9629  
Contact us! Support available 8am-5pm Pacific Time | [www.randomlengths.com](http://www.randomlengths.com) | Website design by View Design Inc.  
1.7.1



RANDOM LENGTHS

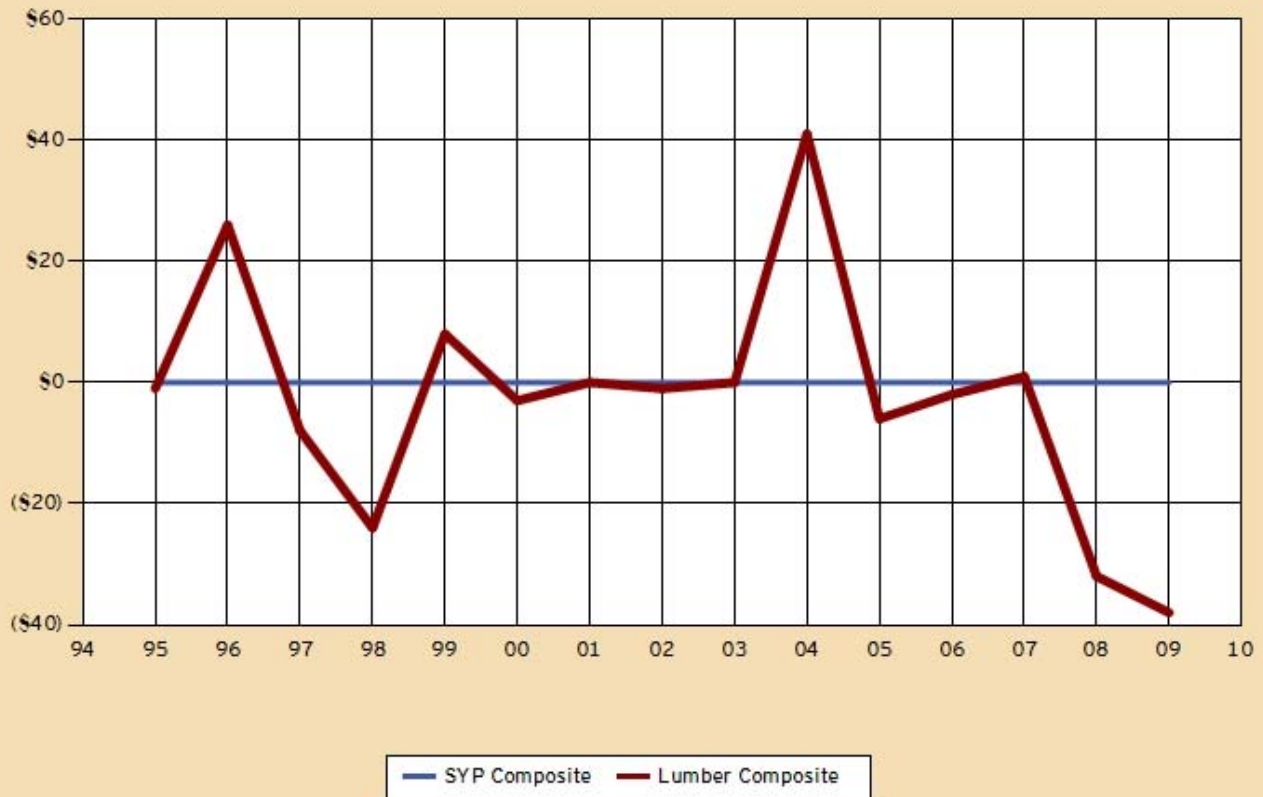
# My Print

ON-DEMAND GRAPHS AND PRICE REPORTS

**Report Name:** !Southern Pine - SYP Composite vs. Framing Lumber Composite  
**Report Type:** Zero-Line Comparison  
**Start Date:** From 1995  
**End Date:** To Present  
**Template Applied:** RL Default [Zero-Line Comparison / Annual]  
**Comments:**  
**Report Items:**

- [Random Lengths Southern Pine Composite Price Current Week](#)
- [Random Lengths Framing Lumber Composite Price Current Week](#)

## SYP Composite vs. Framing Lumber Composite



© Copyright 2009, Random Lengths, WWW.RLMYPRINT.COM

## Southern Pine Composite

Year	Price
1995	\$0
1996	\$0
1997	\$0
1998	\$0
1999	\$0
2000	\$0
2001	\$0
2002	\$0
2003	\$0
2004	\$0
2005	\$0
2006	\$0
2007	\$0
2008	\$0
2009	\$0

## Framing Lumber Composite

Year	Price
1995	(\$1)
1996	\$26
1997	(\$8)
1998	(\$24)
1999	\$8
2000	(\$3)
2001	\$0
2002	(\$1)
2003	\$0
2004	\$41
2005	(\$6)
2006	(\$2)
2007	\$1
2008	(\$32)
2009	(\$38)

© Copyright 2009, Random Lengths Publications, Inc. PO Box 867 Eugene, OR 97440-0867 | 450 Country Club Road #240 Eugene, OR 97401  
 Phone Toll-Free in U.S. and Canada 888.686.9925, or Ph: 541.686.9925 | Fax Toll-Free in U.S. and Canada 888.874.7979, or Fax: 541.686.9629  
 Contact us! Support available 8am-5pm Pacific Time | [www.randomlengths.com](http://www.randomlengths.com) | Website design by View Design Inc.



RANDOM LENGTHS

# My Print

ON-DEMAND GRAPHS AND PRICE REPORTS

**Report Name:** !Southern Pine - SYP #2 2x6 (West) vs. Std 5/4x6 RED 16-foot  
**Report Type:** Zero-Line Overlay  
**Start Year:** From 1995  
**Template Used:** RL Default [Zero-Line Overlay / Monthly]  
**Comments:**  
**Report Items:**

- Kiln dried Radius Edge Decking Southern Pine (East) Standard 5/4x6 16-foot
- Kiln dried Dimension Southern Pine (West) #2 2x6 random length (zero-line item)

## SYP #2 2x6 (West) vs. Std 5/4x6 RED 16-foot



© Copyright 2009, Random Lengths, WWW.RLMYPRINT.COM

**1) KD RED S Pine (East) Standard 5/4x6 16'**

**vs.**

**2) KD S Pine (West) #2 2x6 random**

Month	2005			2006			2007			2008			2009		
	1	2	Diff	1	2	Diff	1	2	Diff	1	2	Diff	1	2	Diff
Jan	\$585	\$354	\$231	\$713	\$400	\$313	\$503	\$273	\$230	\$433	\$231	\$202	\$402	\$225	\$177
Feb	\$621	\$380	\$241	\$704	\$395	\$309	\$501	\$256	\$245	\$414	\$218	\$196	\$399	\$219	\$180
Mar	\$620	\$378	\$242	\$700	\$398	\$302	\$493	\$258	\$235	\$405	\$236	\$169			
Apr	\$615	\$389	\$226	\$703	\$379	\$324	\$473	\$273	\$200	\$410	\$246	\$164			
May	\$623	\$373	\$250	\$716	\$338	\$378	\$472	\$274	\$198	\$523	\$327	\$196			
Jun	\$695	\$402	\$293	\$658	\$306	\$352	\$521	\$321	\$200	\$590	\$305	\$285			
Jul	\$751	\$380	\$371	\$586	\$300	\$286	\$569	\$313	\$256	\$560	\$264	\$296			
Aug	\$750	\$360	\$390	\$555	\$290	\$265	\$521	\$266	\$255	\$536	\$266	\$270			
Sep	\$675	\$392	\$283	\$509	\$297	\$212	\$433	\$270	\$163	\$498	\$270	\$228			
Oct	\$600	\$368	\$232	\$439	\$288	\$151	\$420	\$280	\$140	\$415	\$220	\$195			
Nov	\$590	\$353	\$237	\$426	\$277	\$149	\$420	\$249	\$171	\$385	\$251	\$134			
Dec	\$668	\$363	\$305	\$463	\$285	\$178	\$431	\$266	\$165	\$408	\$257	\$151			

© Copyright 2009, Random Lengths Publications, Inc. PO Box 867 Eugene, OR 97440-0867 | 450 Country Club Road #240 Eugene, OR 97401  
 Phone Toll-Free in U.S. and Canada 888.686.9925, or Ph: 541.686.9925 | Fax Toll-Free in U.S. and Canada 888.874.7979, or Fax: 541.686.9629  
 Contact us! Support available 8am-5pm Pacific Time | www.randomlengths.com | Website design by View Design Inc.  
 1.7.1